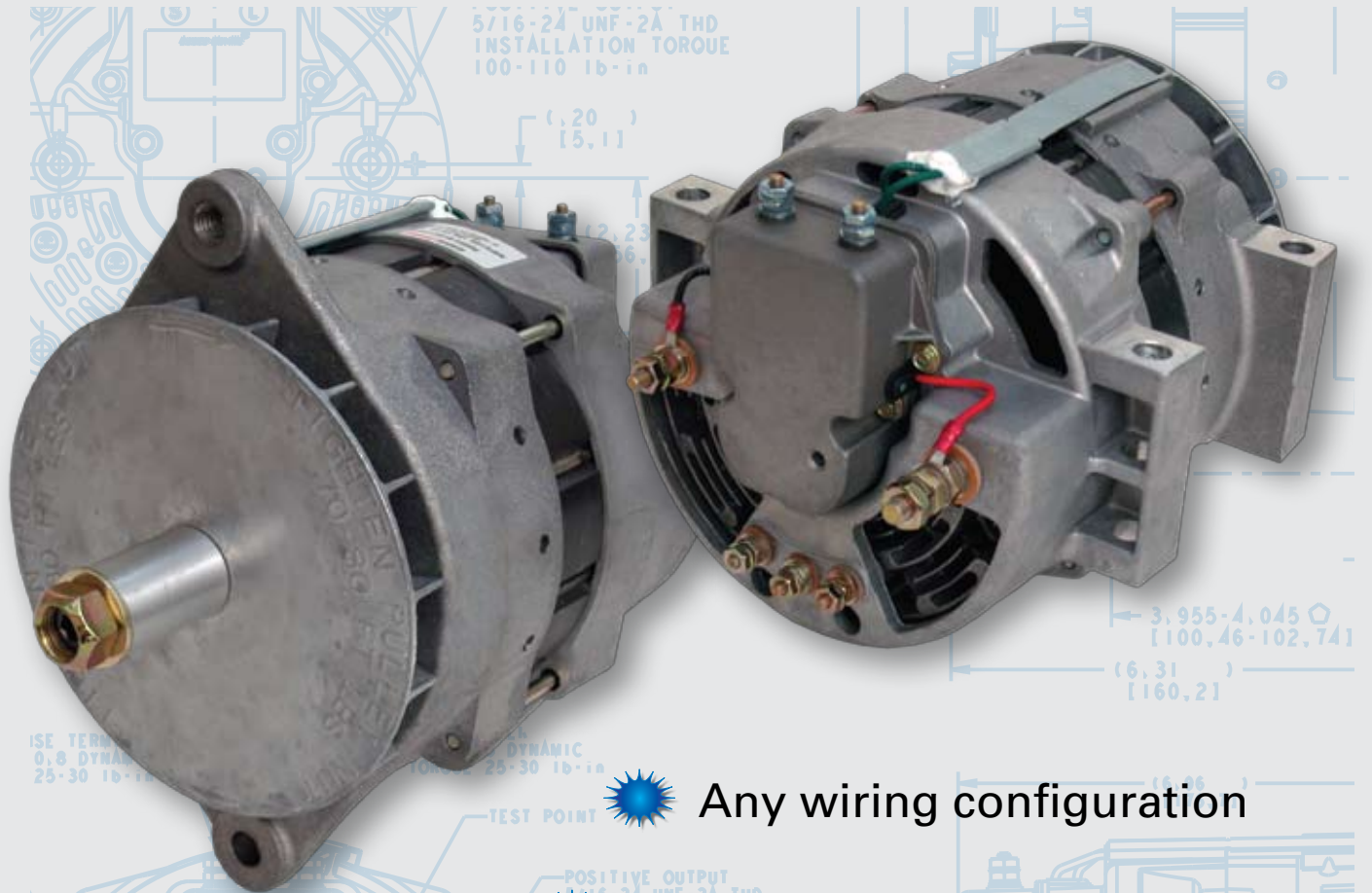


Universal Brushless Alternators



Any wiring configuration

160 or 185 Amp (12/14 volt)

Pad or J180 Mount

☀️ **Remote Sense to optimize alternator output and increase battery life!**

☀️ **Higher temperature rating!
110°C (230 °F)**

☀️ **Heavy Duty Design to withstand the most extreme applications and vibrations!**

☀️ **More Amps at idle than our competition!**

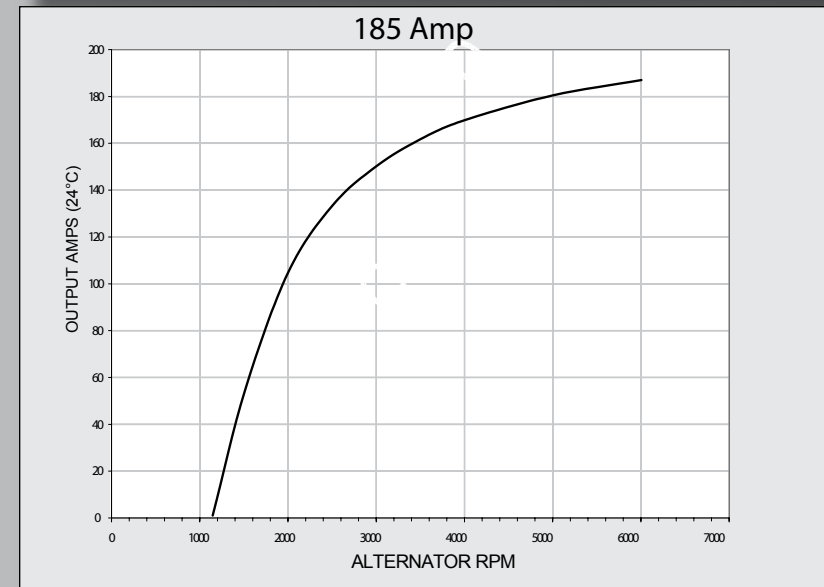
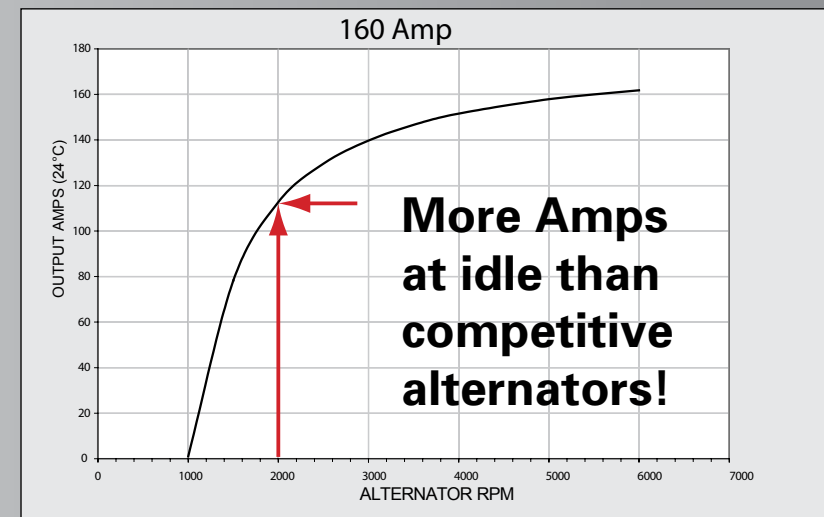
☀️ **Save Money! New, No Core to deal with!**

☀️ **Consolidate your Inventory!**

☀️ **Fewer models to stock, greater versatility!**

☀️ **3 Year / 350,000 Mile Warranty!**

Our 160 Amp Brushless produces 110 Amps at engine idle (2000 rpm)



Our Brushless Alternators are high-temperature rated at 110°C (230°F)



Universal Brushless Alternators

Delco 33SI™				
OE	Amp	Mount	Wires	Reman
19011150	110	J180	1	10459144
19011151	110	J180	1	10459143
19011152	135	J180	1	10459142
19011154	110	J180	1	10459143
19011155	135	J180	1	10459141
19011156	135	J180	1	10459142
19011171	135	J180	2	-
19011174	110	J180	1	10459143
19011200*	135	J180	2	10459450
19011211	110	J180	1	10459144
19011212	135	J180	1	10459141



Delco 34SI™				
OE	Amp	Mount	Wires	Reman
19011157	110	Quad	1	10459145
19011167	135	Quad	1	10459206
19011169	110	Quad	1	10459145
19011170	135	Quad	1	10459206
19011172	135	Quad	2	-
19011179*	135	Quad	2	10459287
19011201*	135	Quad	2	10459451
19011214	135	Quad	1	10459206



Delco 35SI™				
OE	Amp	Mount	Wires	Reman
19011227	110	J180	1	8700023
19011228	110	J180	1	10459606
19011229	135	J180	1	10459609
19011231	110	J180	1	8700024
19011232	135	J180	1	8700000
19011233	135	J180	1	-
19011234	110	Quad	1	10459607
19011244	135	Quad	1	10459610
19011246	110	Quad	1	8700025
19011247	135	Quad	1	-
19011248*	135	J180	2	8700026
19011249*	135	Quad	2	8700027
19011255	135	Quad	2	8700003
19011260*	135	J180	2	10459612
19011261*	135	Quad	2	10459613
19011263	110	J180	1	8700028
19011264	135	J180	1	8700005
19011265	110	Quad	1	8700029
19011266	135	Quad	1	8700006
8600064* (HP)	140	J180	1	8700016
8600065* (HP)	140	Quad	1	8700017

Delco 36SI™				
OE	Amp	Mount	Wires	Reman
8600071*	165	Quad	2	-
8600072	165	J180	2	-
8600177	155	J180	1	-
8600082*	165	J180	2	8700041
8600125* (HP)	170	Quad	1	8700045
8600126* (HP)	170	J180	1	8700046



* Remote Sense Models

J180



Just two of our
J180 Mount
Brushless
Alternators can
replace all of these
models

BLD2130GH 160 Amp
BLD2333GH 185 Amp

110 ° C
High Temp Rated



160 or
185 Amp

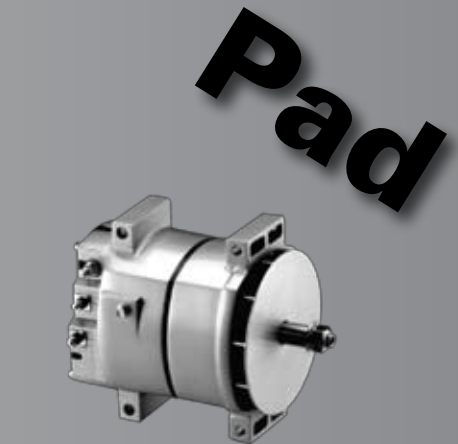
- ☀ Works with remote sense and non-remote sense installations**
- ☀ Can be used with both isolated and case ground applications**
- ☀ Lamp driver and AC tap connections included**

- ☀ High Output, High Temperature
- ☀ New, No Core
- ☀ 3 Year / 350,000 Mile Warranty

Delco 34SI™				
OE	Amp	Mount	Wires	Reman
19011176	110	Pad	1	10459279
19011177	135	Pad	1	10459278
19011215	110	Pad	1	10459279
19011216	135	Pad	1	10459278
19011187*	135	Pad	2	10459288
19011202*	135	Pad	1	10459449

Delco 35SI™				
OE	Amp	Mount	Wires	Reman
19011252	110	Pad	1	10459608
19011253	135	Pad	1	10459611
19011258*	135	Pad	2	8700004
19011262*	135	Pad	2	10459614
19011267	110	Pad	1	8700030
19011268	135	Pad	1	8700007
19011272	110	Pad	1	8700001
19011273	135	Pad	1	8700002
8600066* (HP)	140	Pad	1	8700018*

Delco 36SI™				
OE	Amp	Mount	Wires	Reman
8600015	165	Pad	1	8700039
8600055	165	Pad	1	-
8600060	165	Pad	2	8700040
8600073	165	Pad	2	-
8600171	155	Pad	1	-
8600178	155	Pad	2	-
8600127* (HP)	170	Pad	1	8700047*

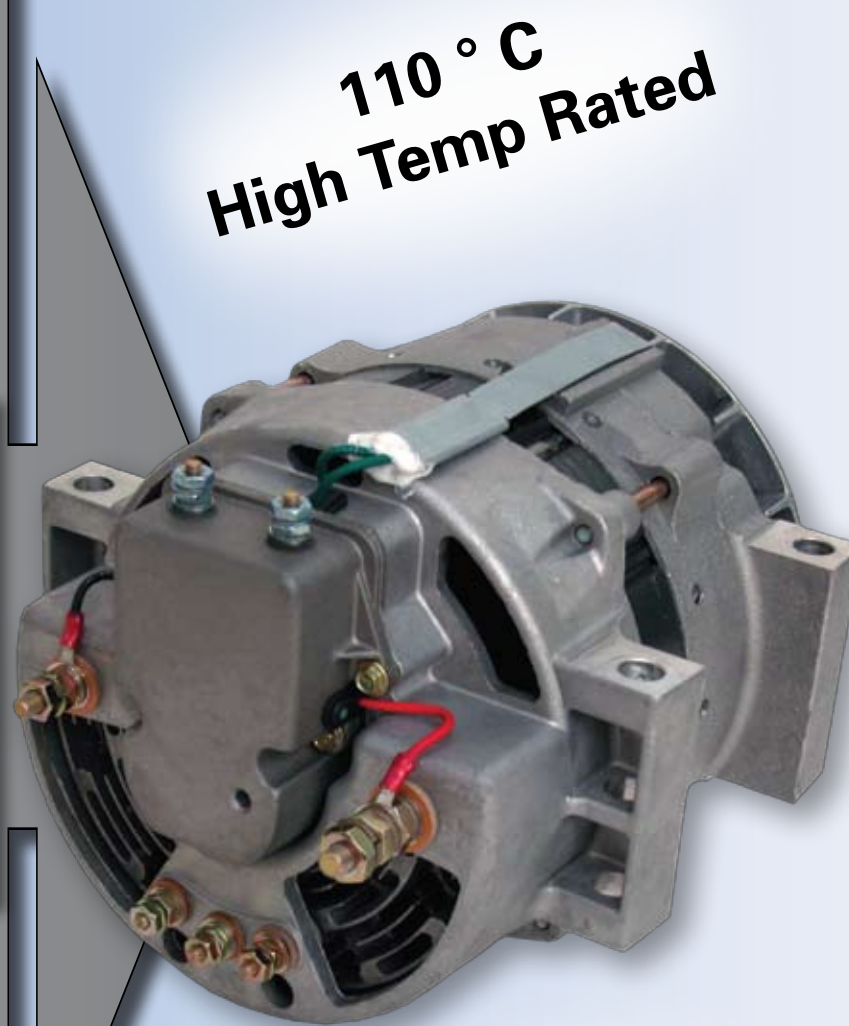


Just two of our Pad Mount Brushless Alternators can replace all of these models

**BLP2131GH 160 Amp
BLP2334GH 185 Amp**



* Remote Sense Models



Remote Sensing Alternators

- ☀ Direct connection to the batteries
- ☀ Monitors real time system voltage
- ☀ Alternator output is optimized.
- ☀ Just 2 mounting types and 2 amperage units can replace all of the listed competitor's models

Brushless Features and Benefits

- ☀ Fewer moving parts, extended life and better performance
- ☀ High temperature rated for today's EPA emissions-compliant engines
- ☀ Solid Rectifier lead frame
- ☀ Vibration resistant design

Our 160 and 185 Amp Brushless units come standard with remote sense and lamp driver. Even if you don't need these features, you can still use them. Please contact your Leece-Neville representative for more details.

**Refer to TSB-1057 for brushless alternator wiring instructions.

THE POWER OF EXCELLENCE

LEECE-NEVILLE HEAVY DUTY SYSTEMS

A DIVISION OF PRESTOLITE ELECTRIC INC.

www.prestolite.com

Manufacturing OE Sales

400 Main Street
Arcade, NY USA 14009

Phone: (585) 492-1700
Fax: (585) 492-1660

Distribution, Aftermarket Sales

7585 Empire Drive
Florence, KY USA 41042

Phone: (859) 525-8801
(800) 354-0560
Fax: (800) 997-6202