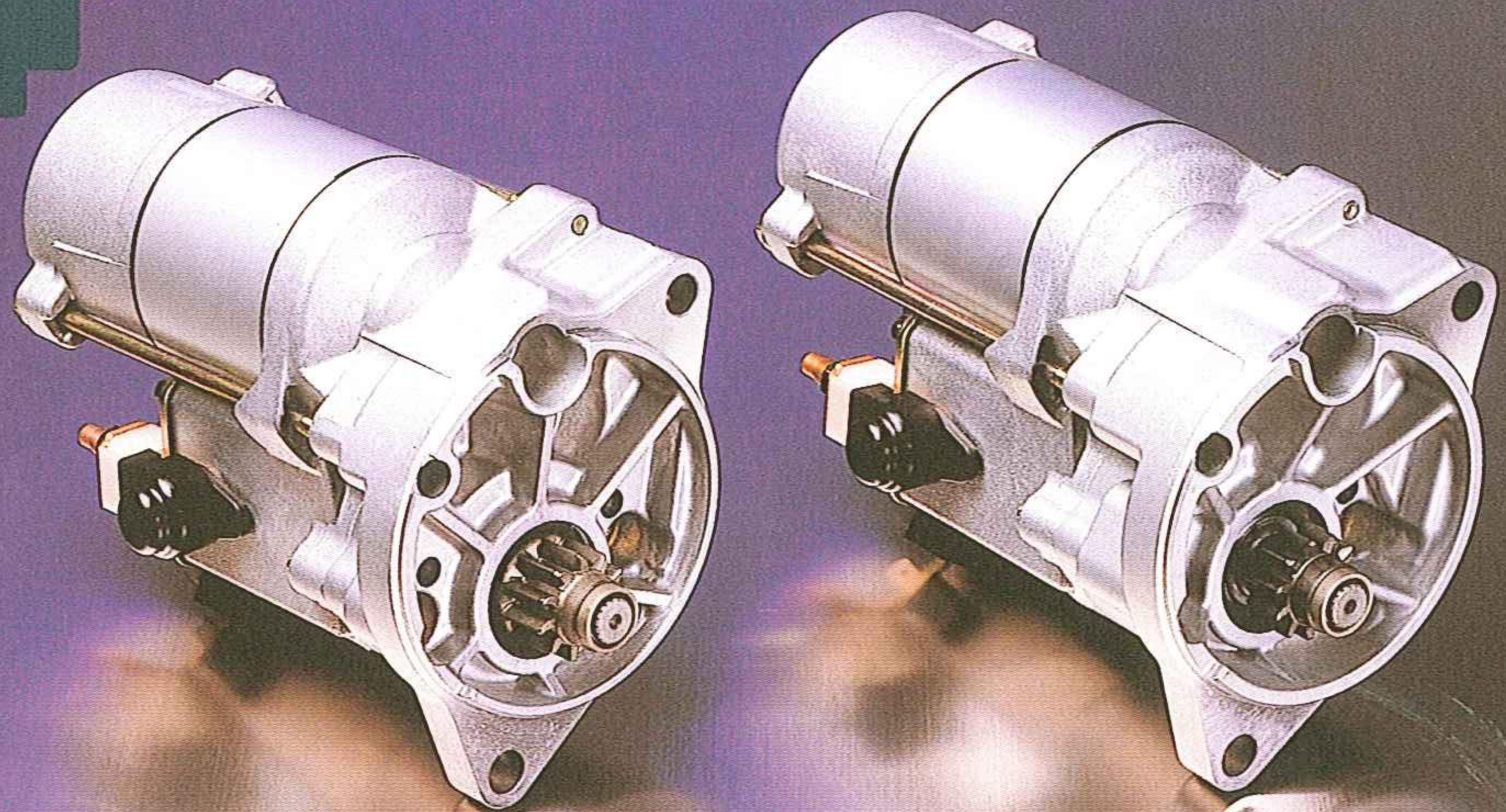
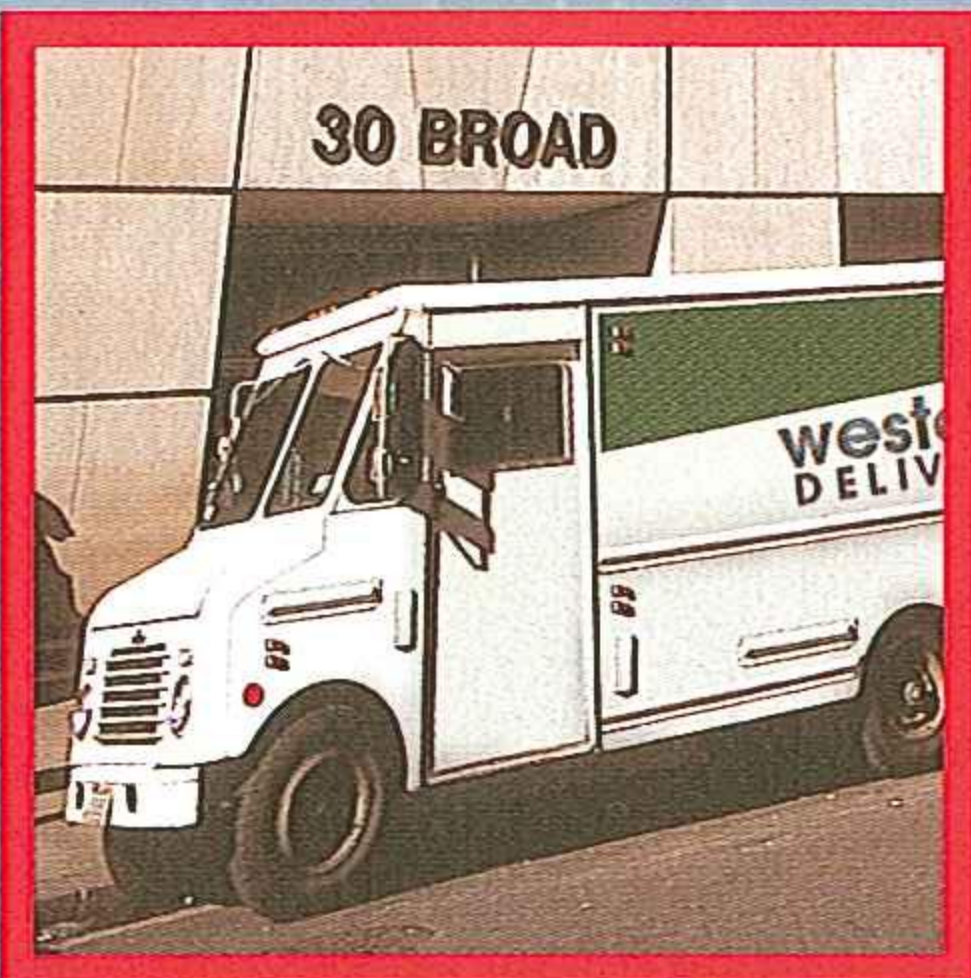


DENSO

228000-8430 AND 228000-8440

GEAR REDUCTION STARTERS FROM THE WORLD'S LARGEST STARTER MANUFACTURER



GEARED FOR YOUR TOUGHEST APPLICATIONS

For thirty years the biggest names in commercial power plants have chosen one name in cranking power—DENSO. Around the globe, DENSO gear reduction starters simply install faster, maintain easier and withstand abuse better under extreme conditions. Quality, durability, reliability and performance have made DENSO the world's largest starter manufacturer.

APPLICATIONS (GASOLINE)

228000-8430:
FORD 4.9L, 5.0L, 5.8L
MODEL E & F SERIES
TRUCKS (A/T ONLY)
FORD 4.9L, 5.0L, 5.8L
PASSENGER CARS
(A/T & M/T)

228000-8440:
FORD 4.9L
MODEL E & F SERIES
TRUCKS (M/T ONLY)

FEATURES

Compact and lightweight design

High torque

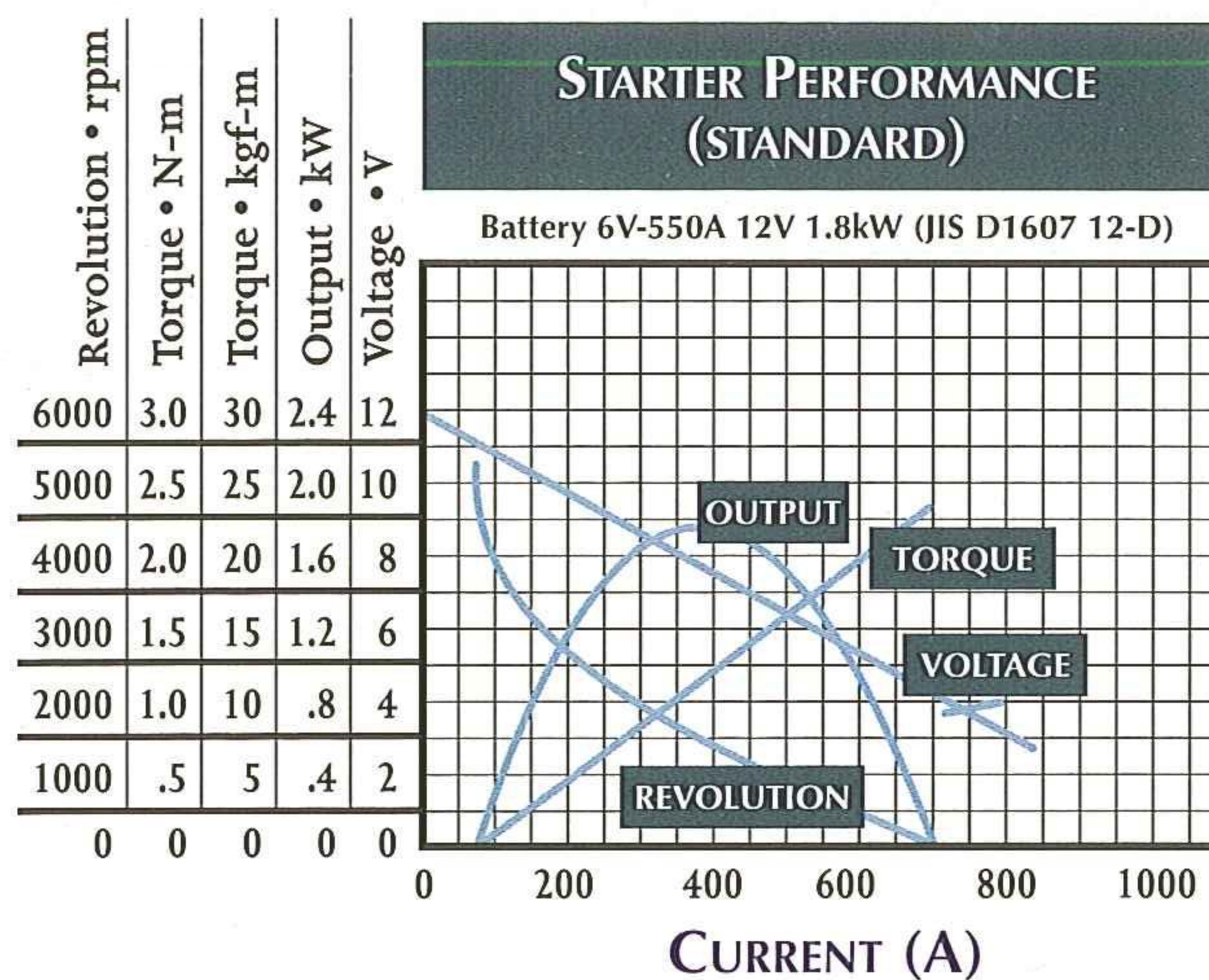
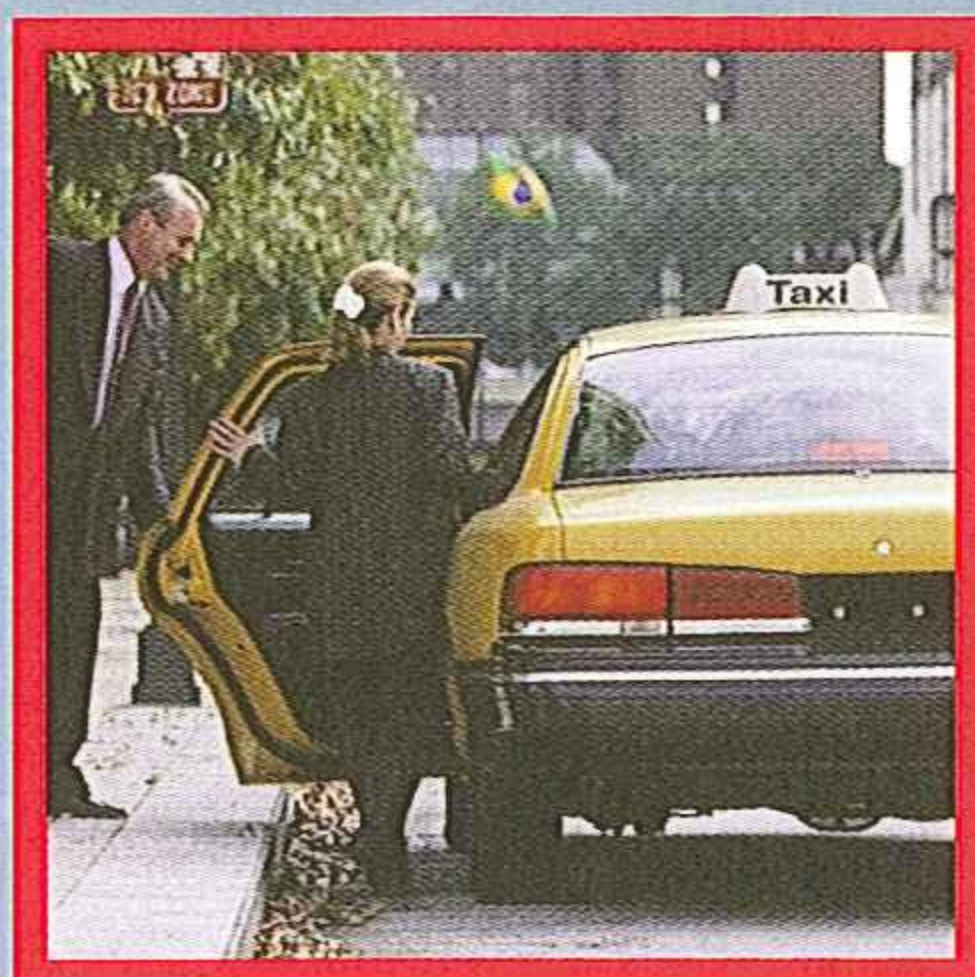
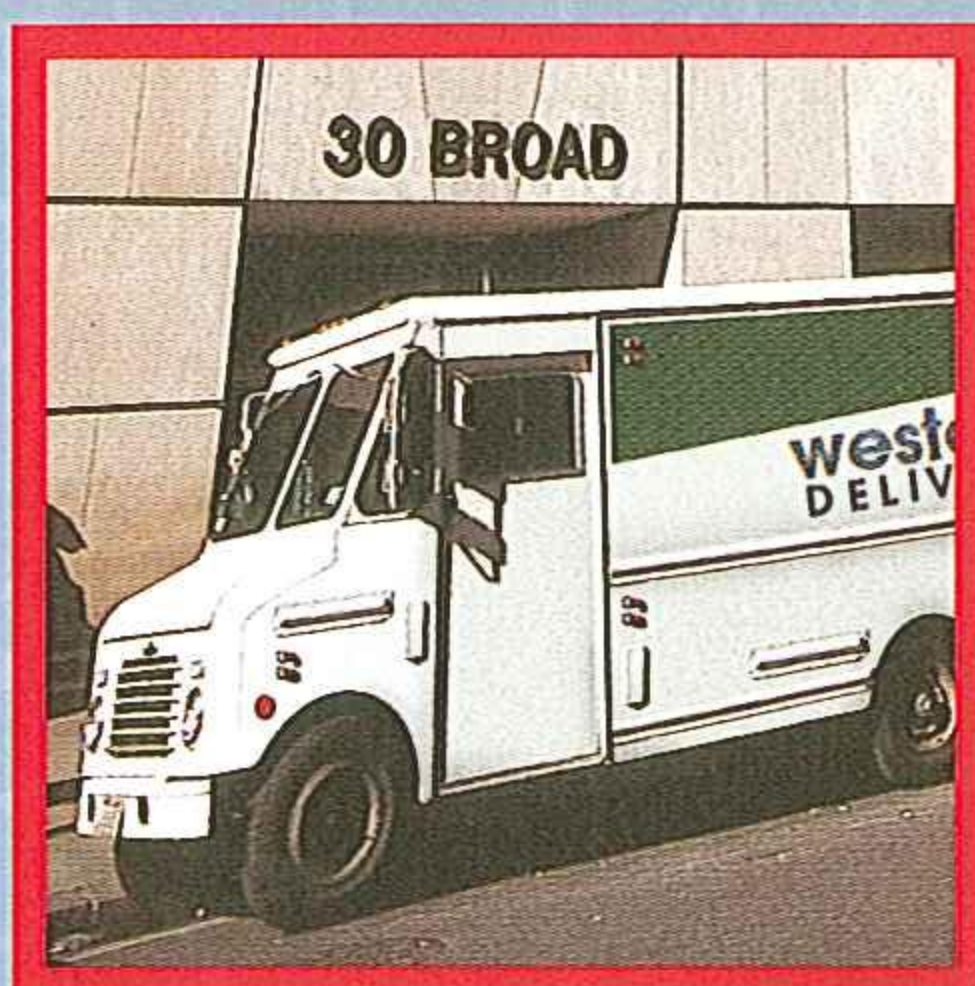
High durability in frequent
stop/start applications

Self-contained clutch shaft

Solenoid and clutch arranged
co-axially for smooth
engagement

Sealed heavy duty ball bearings

**228000-8430 AND
228000-8440**



USAGE

- Airport/Airline Vehicles (GSE - Ground Support Equipment)
- Food Service Fleets
- Landscape Vehicles
- Law Enforcement Fleets
- Package Delivery Fleets
- Rental Equipment Fleets
- Snack Delivery Fleets
- Taxi Cabs
- Utility Company Fleets

SPECIFICATIONS

- 12V 1.8 kW
- Pinion: 11 tooth
- Rotation: Clockwise (viewed from pinion side)

DENSO

DENSO SALES CANADA, INC.

195 Brunel Road
Mississauga, ON L4Z 1X3
1-866-729-3626